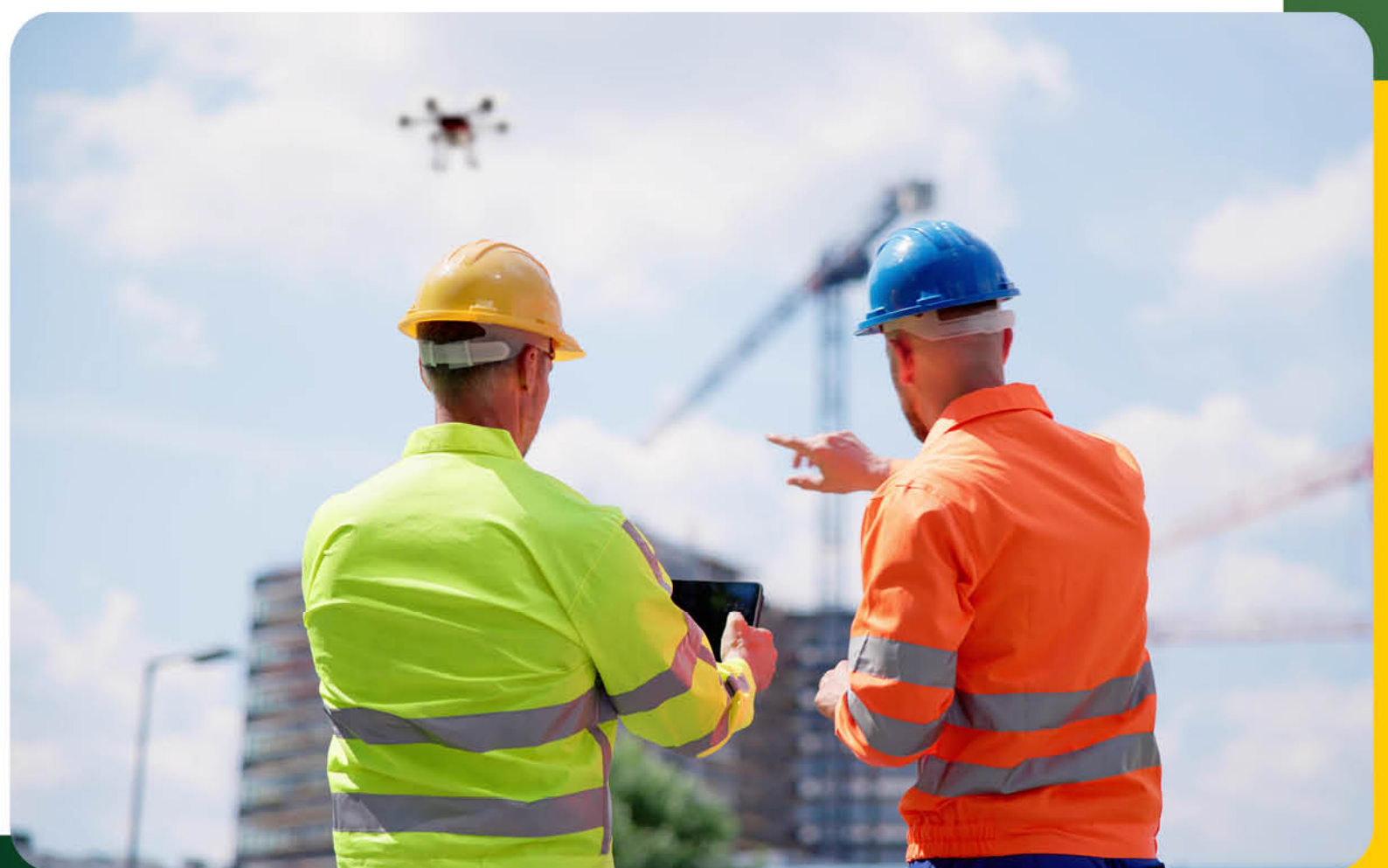




AMERICAN SOCIETY OF
SAFETY PROFESSIONALS

Emerging Technologies in Workplace Safety and Health





Technological advancements continue to provide new and innovative ways to improve worker safety.

These tools can help you better manage risks and take a more proactive approach at your workplace.

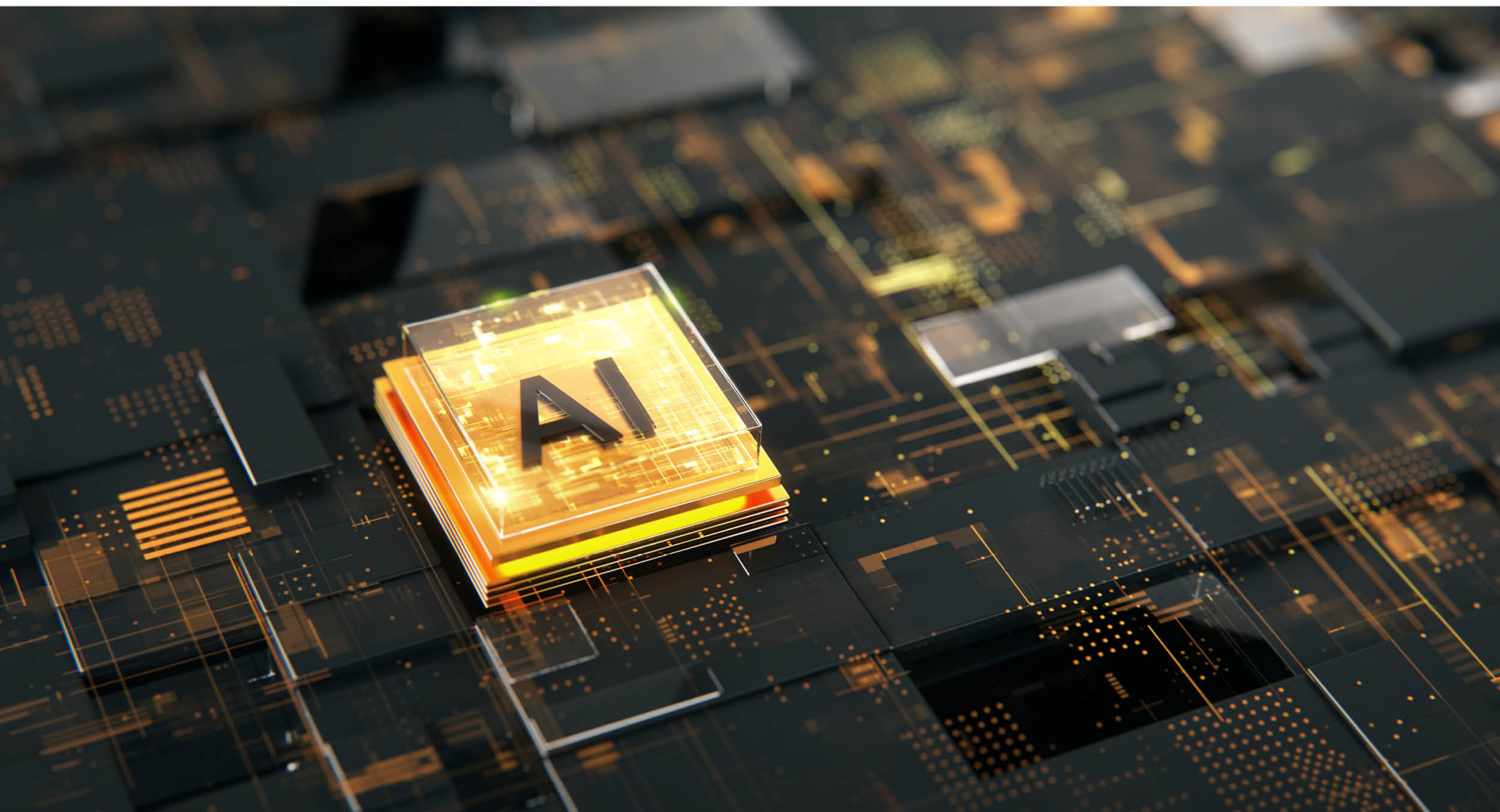




Artificial Intelligence (AI)

AI provides improved data-gathering and analysis capabilities, offering comprehensive insights into safety performance.

An improved data stream can help facilitate more informed decision-making and greater engagement with your workforce.



Artificial Intelligence (AI)

Our Safety Trekr AI-powered search tool provides access to all 1,300 pages of our Safety Professionals Handbook, to effortlessly find answers to your workplace safety questions.

This tool provides precise safety guidance that is based on trusted data and real-world experiences, enabling faster decision-making and more efficient compliance with workplace safety standards.



SAFETY TREKR AI™

———— BROUGHT TO YOU BY ————



AMERICAN SOCIETY OF
SAFETY PROFESSIONALS



Virtual Reality (VR)

VR training allows workers to train in realistic situations in a safer, simulated environment, while providing real-time feedback on their performance.





Drones

Drones offer the capability to capture aerial video of utility installations and construction sites.

This keeps workers on the ground, eliminating the risks associated with working at height to conduct inspections.

For utilities or sites located on rough terrain that is hazardous to traverse, drones eliminate the need to have workers conduct walking inspections.





Mobile Technology

Leveraging mobile technology at your work sites can help improve inspections, audits and incident reporting.

You can also easily access critical workplace safety and health guidance to effectively assess risks and address hazards on your job sites.





AMERICAN SOCIETY OF
SAFETY PROFESSIONALS

Learn more about how
these tools can help you
manage risks in your
workplace.

Visit assp.org/risk